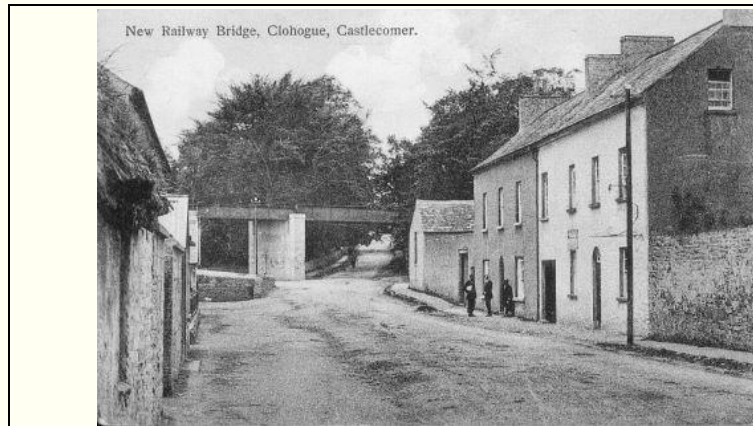


Step back in time



Castlecomer In the Past



Chatsworth Street in the past. Notice the bridge at the end of the street. This used to carry the coal train going to and from the Deerpark Mines. The bridge crosses the Clohogue river (stony river) and the Clogh and Ballinakill roads.



Chatsworth Street in the past. Notice the bridge at the end of the street is gone. When the mines closed C.I.E. sold off the land that the track ran over to local land owners. We think the bridge was taken by the Co. Council and put over some stream in south Kilkenny



Barrack Street. The railway track as seen in the previous photo continued on behind the houses to cross this street at about the centre of the photo. It passed down at the back of the Church, behind Maryville, down to the Railway Garage where it continued right beside the Kilkenny road down as far as Dysart Bridge. Follow this link <http://www.sip.ie/sip019B/train/track.htm> on our Coal Mining pages to see where the train ran.

Cantwells old Bar on Kilkenny St. Beside the old Court House has been used over the years for several different businesses. It is currently unoccupied.



This Old Hotel is the last building on the South Side of The Square, opposite the Bank and adjacent to the “Mill Lane” and Wandesforde National School.



The fountain which was located in the centre of the Square was very important and a focal point for the town. People of the town drew water from here for domestic use. What a pity it was removed!

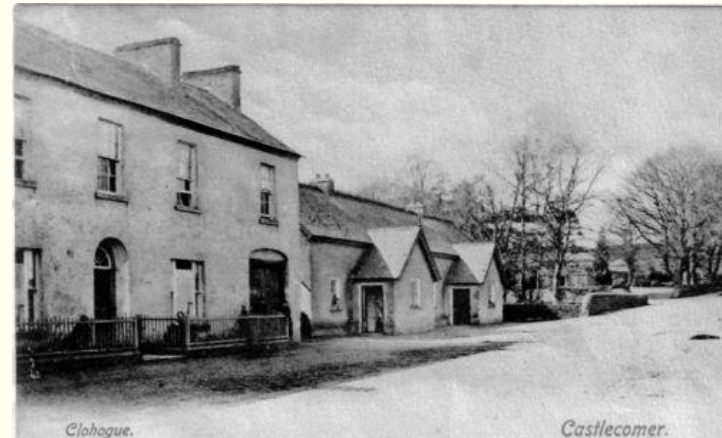


The Court House and Town Clock at the top of Kilkenny St. The area behind the court house is known as “Market St.” or locally as “The back of the Market”. There is still a “Weigh Bridge” back there. Former Cobbler or Shoemaker Bill Brennan was in charge of the bridge. Bill had his business back there in one of the neat houses beside the “Dressmaker” Mrs. Doyle where everyone went to have your clothes repaired, shortened, lengthened or patched! The building ceased as court house around 2010



Preparing the Reeds for Basket Making

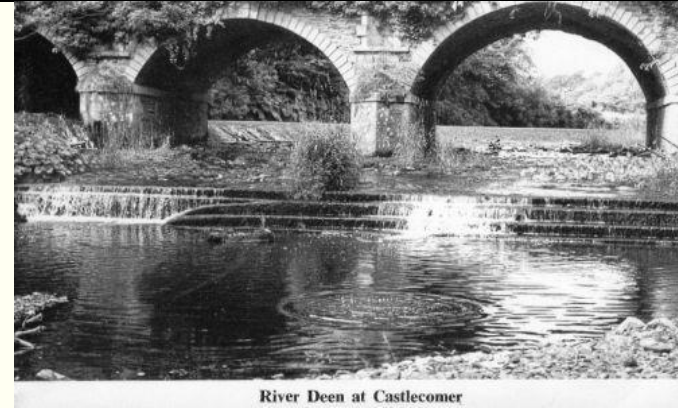
The Old Creamery House at the top of the town is a fine structure and thankfully is currently under repair. Before it became the “Creamery House” and home to the creamery manager it was a “Basket Factory” and prior to that as the photo shows it was a “Perambulator” factory or simply a Pram factory. Note the man at the entrance driving an “Ass and Cart” and note three fine prams just inside the gates.



Clohogue Bridge at the end of Chatsworth Street.



The “Mansion” or Big House which was home to the Wandesforde Family located opposite the Discovery Park or “The Demesne” as it is known as locally.



River Deen at Castlecomer

The “Big Bridge” or “**Dublin Bridge**” at the end of The Square



Wandesforde family or friends boating on the lake in the



The “Lodge” or gatehouse at the entrance to the Wandesforde

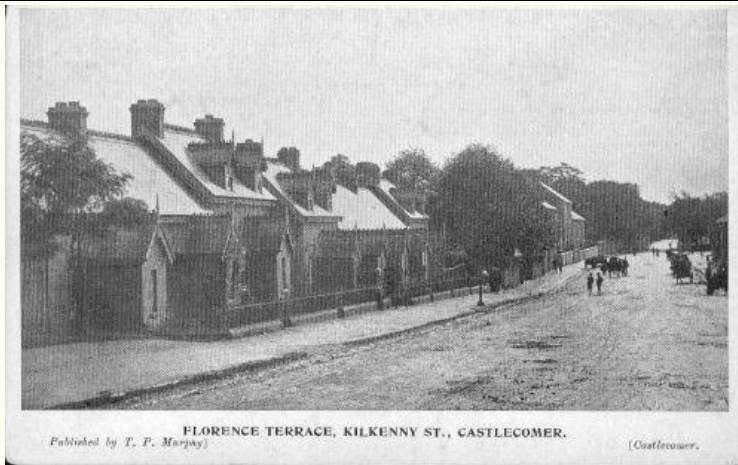
Demesne



Home.



Lower Kilkenny Street showing “The Tailor Dunphy’s on the left – curved window and the Presbytery on the right.



Upper Kilkenny Street showing “Cantwells Bar” on the left and the “Post Office” straight in front. The Post Office housed the “Black and Tans” during the troubles.



Florence Terrace built for the Miners by Captain Wandesforde and named after one of the Wandesforde family



Church of the Immaculate Conception, Castlecomer.

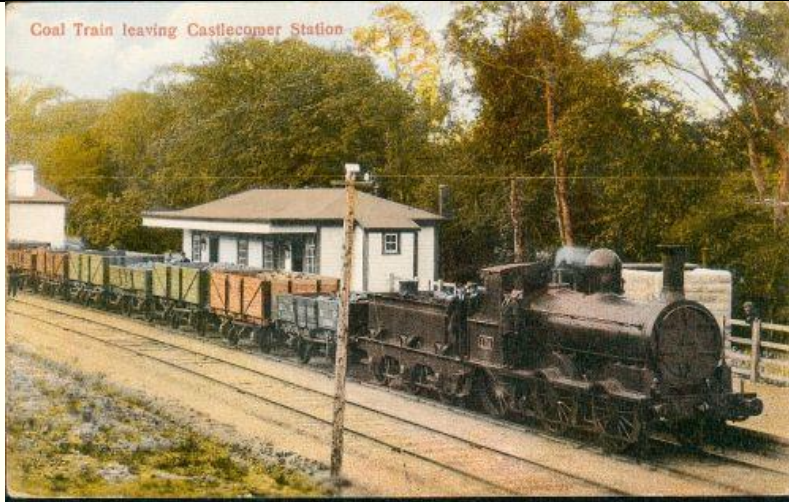
The Church of the Immaculate Conception. Catholic Church. Note the spires on the church which have since been removed for safety purposes. Unfortunately the original gates and piers have also been removed.

Relatively recent (circa 1960) view of the Square taken from the top of the Creamery building.



ST. MARY'S PROTESTANT CHURCH, CASTLECOMER.

St. Mary's Church of Ireland. Protestant Church. Located just outside the town on the Dublin Road. All original features are intact.



The Castlecomer train that transported goods and people to and from Kilkenny and coal from the Deerpark Mines. Note the little train station and at the end of the train the “Stationmasters House” The house is totally intact today and incidentally was supposed to be the first house in Castlecomer to have a “Bath”.



The Swing Bridge. One of many bridges constructed over the river Deen to allow access, usually for Miners walking to and from work at the Deerpark Mines. This one however we think was located just below the big bridge at Wandesforde school and was probably to provide access to the big house from the school and the two houses on the same site.